

CUSTOM BODYSPA DESIGN GUIDE

The Custom BodySpa has been engineered to give you ultimate flexibility in creative room design. This manual is divided into three main sections: Design Guide, Installation, and User’s Guide. Use the Design Guide to plan your installation, the Installation section for actual construction and assembly, and the User’s Guide to safely enjoy the benefits of your Custom BodySpa.

This Custom BodySpa operates at flow rates up to **80 gallons per minute**. To achieve a watertight installation, it is critical that you follow all the design and installation instructions carefully. Pay particular attention to leveling and sealing details to obtain a satisfactory installation. **A WATERPROOFING MEMBRANE OR COMPOUND MUST BE INSTALLED TO THE ENTIRE FLOOR AND WALL SURFACES WITHIN THE CUSTOM BODYSPA ROOM.**

THE CUSTOM BODYSPA IS INTENDED FOR INDOOR USE ONLY.

You will need to incorporate some basic design features into your Custom BodySpa room plans. Please study all design parameters carefully, and incorporate them into the project layout. If necessary, consult with a proven expert in custom shower installations before attempting this project.

Kohler Co. shall not be responsible for leakage that occurs as a result of inadequate or poor assembly and installation techniques.

TABLE OF CONTENTS FOR YOUR DESIGN GUIDE	
THE TOWER AND SYSTEM	3
PROVIDE ACCESS	3
ROOM SIZE	3
WATER-FREE ZONE	4
PUMP BOX	4
WIRING CONNECTIONS	5
SUCTION ASSEMBLY	5
DRAIN LOCATION	6
WATERPROOFING MATERIAL	6
CEMENT BOARD	7
WATER-RESISTANT WALL MATERIAL	7
FINISHED WALL MATERIAL	7
KEYPAD CONTROL LOCATION	7
FOOTBATH BASIN	8
PRIMARY HEAT SOURCE	9
AUXILIARY HEAT SOURCE	9
FAUCETS AND FITTINGS	9
PROJECT REQUIREMENT SUMMARY	9

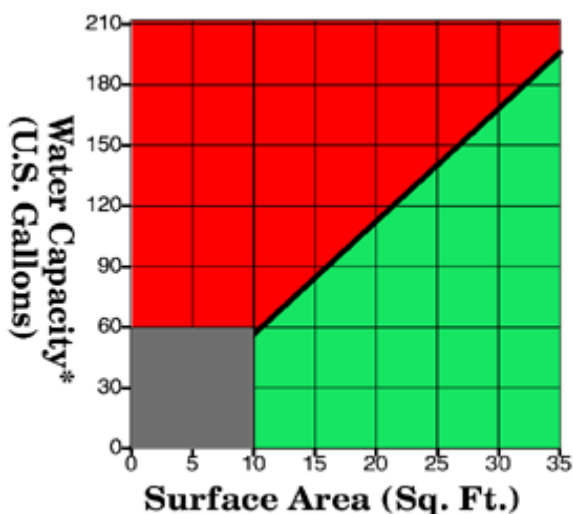
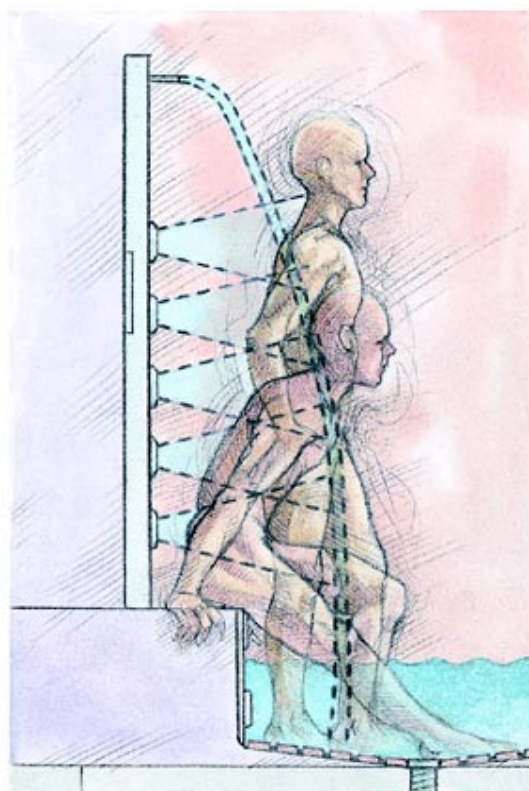


THE TOWER AND SYSTEM

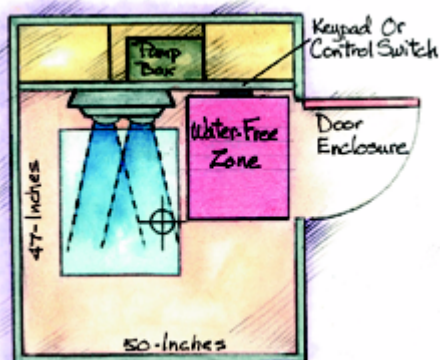
Your Kohler Custom BodySpa is designed to stimulate, invigorate, and energize your body for total hydro-massage relaxation. The Custom BodySpa tower features 10 BodySpa jets in five paired arrays, and a lighted, overhead Waterfall to personalize your BodySpa experience. With the BodySpa tower, you have complete freedom of movement (and choice) to focus your hydro-massage where you need it the most.

The Custom BodySpa system features an easy-to-read electronic keypad control. With the keypad, you can individualize each BodySpa adventure by selecting the lighted, overhead Waterfall or any combination of five pairs of BodySpa jets. You can vary the intensity of your BodySpa hydro-massage from gentle to vigorous with the touch of a finger.

The quiet but powerful 2-horsepower pump and motor propel and recirculate the hydro-massaging water up to two times each minute. An integral heater helps maintain the temperature of the water as long as the Custom BodySpa is running.



*Based Upon 9-inch Nominal Water Depth



PROVIDE SUFFICIENT ACCESS

You must provide sufficient access to the pump box and controls, drain connections, suction housing, water supplies, and any lighting fixtures or other accessories. The false wall discussed on Page 4 may provide adequate access to all necessary components.

ROOM SIZE

We recommend a room size approximately 60-inches long x 48-inches wide x 84-inches high for the Custom BodySpa installation. The basin design must provide for a water depth of at least 9-inches measured along the basin wall. Construct the basin framing to result in an overall basin water capacity between 90 and 200 U.S. gallons (study the chart at left). A room size of **at least** 47 x 50-inches will be large enough to promote freedom of movement while using the Custom BodySpa, yet small enough to contain the comforting heat and moisture produced by the system.

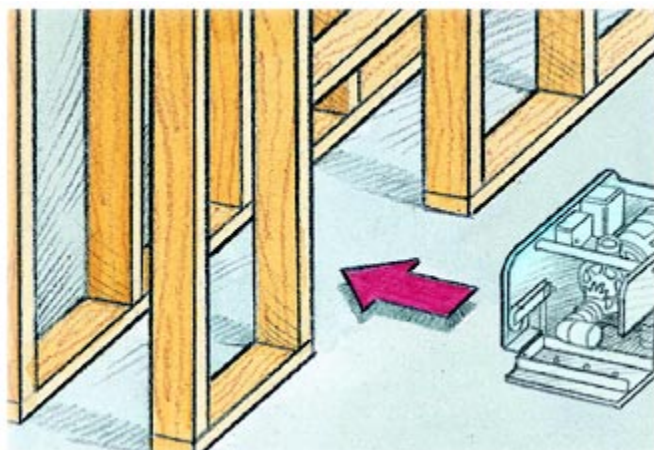
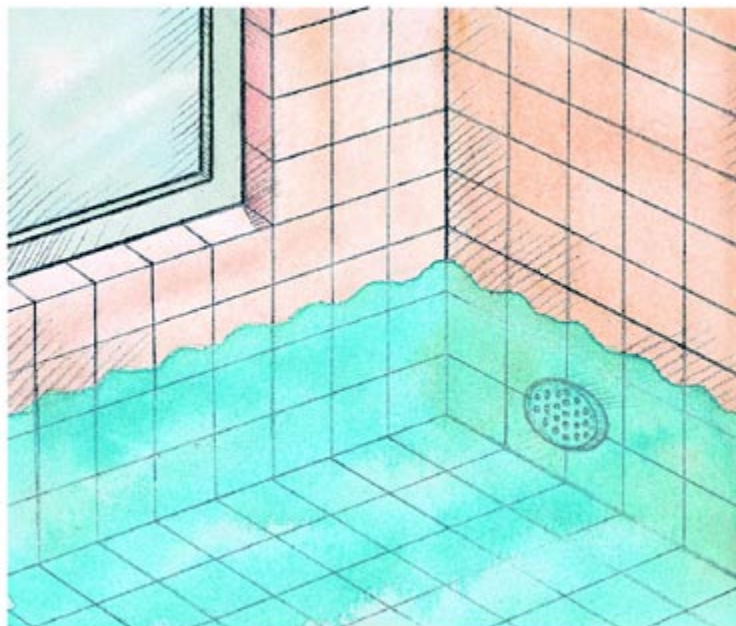
A smaller-sized room may not support the required "Water-Free Zone" area for the user to move clear of the powerful water stream.

If you design the room much larger than 60 x 48-inches, you need to consider adding an auxiliary heat source to compliment the integral pump heater. This auxiliary heat source could be a steam generator. Any auxiliary heat must have its own separate electrical service.

WATER-FREE ZONE

You must design a Water-Free Zone area into the room layout. The Water-Free Zone offers three important safety and comfort benefits that should give it the highest priority in your design plans.

- **Keypad control access:** User safety and comfort dictate that the keypad control be installed and operated in the room's Water-Free Zone because of the volume and force of the BodySpa water.
- **Door enclosure location:** The Water-Free Zone offers a perfect location for the user to enter and exit the Custom BodySpa room unimpeded by the forceful waters of the hydro-massage. The door enclosure must be installed to a side wall, away from the main force of the water, to prevent water leakage past the door seals. Kohler Co. offers several door enclosure designs that are suitable for use with the Custom BodySpa. We recommend a pivot door enclosure from Kohler's Focal or Arica lines.
- **Water-Free Zone relief:** It is important for the Custom BodySpa room to have an area where the user can quickly and easily step out of the water stream for a few moments, if desired.



PUMP BOX

NOTE: Do not remove the pump from the pump box.

The pump box contains a 2-horsepower pump and motor, along with a control box and an integral heater.

You must provide at least 32 cubic feet (length x width x height) of unrestricted air space around the pump box to allow the motor to cool properly and to provide accessibility to the pump and control box. We suggest you construct a false wall behind the tower face wall framing. Locate the false wall parallel with the face wall.

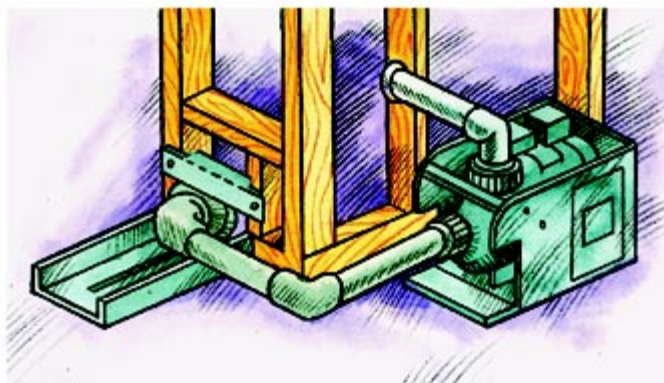
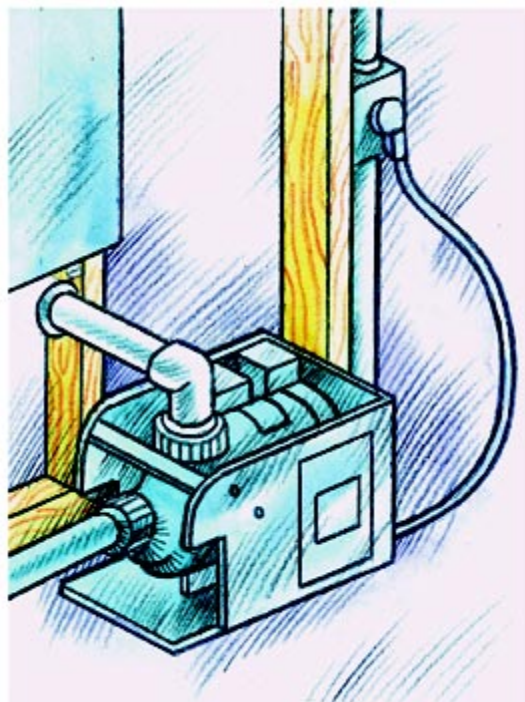
Plan to install the pump box underneath the tower to maximize accessibility, and so the pump inlet faces in the direction of your planned suction line. The pump box should be within 36-inches to either side of the tower to ensure that the tower and Waterfall cables reach to the pump box.

Plan the false wall so at least 12-inches of access space exists to the back of the face wall. If you plan the installation for an existing home, or if several different access panels along the back wall are not feasible, provide more than 14-inches of access space between the false wall and face wall so a repair person can maneuver between the walls.

WIRING CONNECTIONS

⚠ WARNING: Risk of electrical shock. To reduce the risk of electric shock, connect only to a properly grounded, grounding-type receptacle, protected by a Ground-Fault Circuit-Interrupter (GFCI). Do not remove the plug's grounding pin. Do not use a grounding adapter.

The Kohler Custom BodySpa is equipped with a cord and plug. All wiring of the pump has been completed at the factory. A licensed electrician will need to install a GFCI-protected, 120 V, 20 A, grounded outlet. The electrician must install the outlet behind the BodySpa, and within 24-inches of the pump. No other load should be on this circuit.



SUCTION ASSEMBLY

The purpose of the suction bracket is to position the suction housing at the correct installation height, and to provide the installer with a means of securing the suction housing in place during final assembly. Do not remove the suction fitting from the bracket assembly.

You can locate the suction along any wall of the Custom BodySpa room within 48-inches of the pump box, as long as the overall wall thickness will not exceed 1-3/4-inches. Plan to provide access to the suction assembly in case servicing is needed. The suction location must allow the installer to route straight lengths of 1-1/2-inch (I.D.) rigid PVC tubing, with no vertical elbows inline to trap water, from the suction housing to the pump inlet. You can use a 90-degree elbow at a wall corner if the suction is located on a different wall than the pump box.

NOTE: Refer to the minimum waterline height information on the side of the pump box to determine the maximum pump box height needed for the pump to prime effectively.

Plan to apply a minimum 1/4-inch per foot pitch toward the suction housing to provide adequate water drainage through the suction line.

DRAIN LOCATION

We recommend the K-7179 Drain for this installation. The K-7179 Drain has been specially designed for the Custom BodySpa, and uses a large capacity strainer and drain tube to reduce drainage time. The drain tube section of the K-7179 Drain is provided by the installer, and must be 1-1/2-inch (I.D.) rigid PVC tubing.

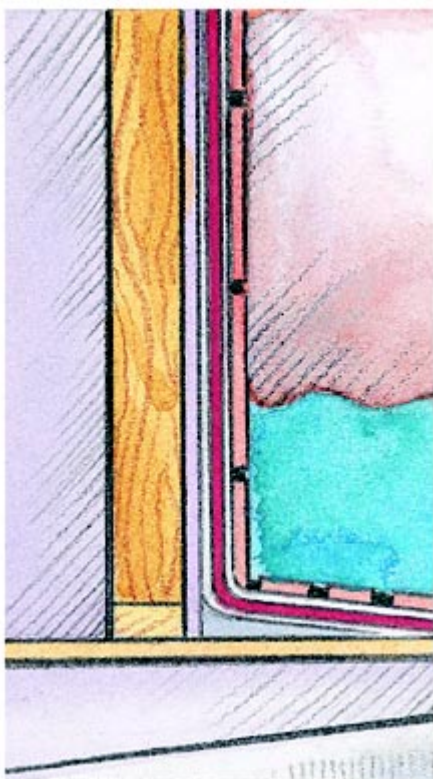
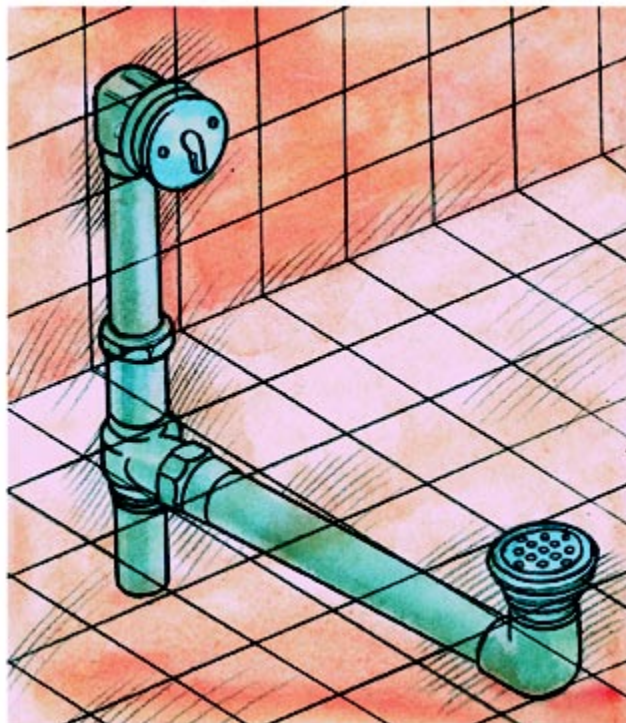
The K-7179 Drain overflow assembly is designed for a finished wall thickness between 3/4 and 1-3/4-inches, and for a maximum finished basin thickness of 1-1/2-inches at the drain.

The drain should not be located more than 48-inches from the drain tee.

Refer to the roughing-in information included with the K-7179 Drain for specific details.

NOTE: The K-7179 Drain is packed with its own installation instructions. Please refer to that document to install the drain.

You can use a floor drain other than the K-7179 if you wish. Any floor drain used for this installation must drain water at a minimum rate of 10 gallons per minute to minimize drainage time, and must use 1-1/2-inch (I.D.) drain tubing. Be sure to follow the drain manufacturer's instructions.



WATERPROOFING MATERIAL



WARNING: Risk of property damage and concealed leakage. To achieve a watertight BodySpa installation, it is critical that you install a waterproofing membrane or applied compound according to the material manufacturer's instructions. Kohler Co. will not be liable for damage caused by waterproofing materials that are improperly installed or sealed.

The Custom BodySpa produces water flow rates up to **80 gallons per minute**. To achieve a watertight installation, it is critical that you install a waterproofing membrane or applied compound to the **entire** floor and wall surfaces (up to the ceiling). You must follow the material manufacturer's instructions to ensure a watertight installation.

CEMENT BOARD

The Custom BodySpa room design must utilize cement board over the entire wall surface from ceiling to subfloor.

WATER-RESISTANT WALL MATERIAL

You should plan to install water-resistant wall material on the entire ceiling surface.



FINISHED WALL MATERIAL

You can use any waterproof material to finish the walls and ceiling of your Custom BodySpa room, including ceramic and glass tile, stone, and solid surface material. Keep in mind that various materials have different heat-retaining properties.

KEYPAD CONTROL LOCATION

Consider three factors when you choose a location for the keypad control. The keypad control must be

- **within the Water-Free Zone:** User safety and comfort dictate that the keypad control be installed and operated within the room's Water-Free Zone because of the volume and force of the BodySpa water.
- **at the recommended height:** We recommend that the keypad control be located between 58 and 60-inches up from the floor of the footbath basin to maximize usability and user comfort.
- **within reach of the control box:** The keypad control uses a 10-foot cable which cannot be spliced, extended, or stretched. Choose the keypad control location accordingly.



FOOTBATH BASIN

Design a mortar bed footbath basin using typical shower basin fabrication methods and materials. Carefully study the following factors while designing your Custom BodySpa footbath basin.

- Basin size and shape:** We recommend a room size approximately 60-inches long x 48-inches wide x 84-inches high for the Custom BodySpa installation. The basin design must provide for a water depth of at least 3-inches above the top of the suction cover. The threshold of the basin should be 6 to 7-inches above the top of the suction cover. Next, locate the drain overflow so it will produce a minimum water depth 3-inches above the top of the suction cover. Design the basin framing to provide an overall basin water capacity between 90 and 200 gallons. Study the Surface Area chart on Page NO TAG.

The size of the basin will affect the amount of hot water needed each time the user fills the Custom BodySpa footbath basin.

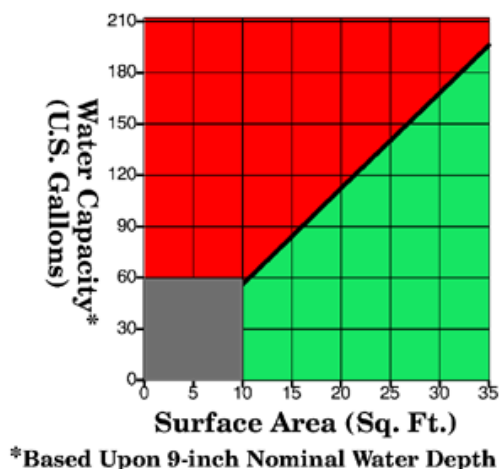
Ledges, seats, shelves, and steps are all excellent ideas to enhance the character and functionality of the Custom BodySpa installation, but remember that these things may also slow down the return of water to the basin. This in turn may demand that the user add more water to fill the footbath basin before use.

- Floor pitch:** Incorporate a finished floor pitch of 1/4 to 1/2-inch per foot toward the drain to provide a safe, efficient water drainage surface.
- Finished floor material:** The finished floor material must be slip-resistant tile or stone to reduce the potential for slipping accidents.
- Bear in mind that various materials offer different heat-retaining properties.
- Desired drain location:** The drain location should be no more than 48-inches from the drain overflow ell. Design the footbath basin so the combined thickness of the subfloor, cement board, waterproofing material, mortar bed, and finished material does not exceed 1-1/2-inches at the drain if the K-7179 Drain will be used.

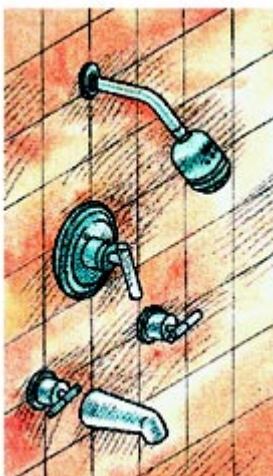
For the K-7179 Drain, the combined basin wall thickness must be between 3/4 and 1-3/4-inches where the drain overflow will be installed.

- Suction location:** The center of the suction cover must be located between 2-1/2 and 3-1/2-inches up from the finished floor surface.





***Based Upon 9-inch Nominal Water Depth**



PRIMARY HEAT SOURCE

Employ a water heater of sufficient size and efficiency to supply hot water to the Custom BodySpa footbath basin, while still able to maintain other hot-water needs of the residence. Carefully study the chart at left to determine the amount of hot water your installation will require. Typically, you can expect a 50/50 mix of hot and cold water to fill the footbath basin. So, a 50-gallon water heater will supply the minimum hot water needs for a 100-gallon capacity basin.

If the footbath basin water capacity is over 80 gallons, you should consider installing a dedicated water heater for the BodySpa installation alone, and implement a second water heater for all other hot water applications in the residence.

AUXILIARY HEAT SOURCES

NOTE: The Kohler Custom BodySpa employs a heater inside the pump housing to automatically maintain the water temperature at a comfortable level. This heater is not intended to replace the primary water heater.

We recommend a room size approximately 5-feet long x 4-feet wide x 7-feet high for the Custom BodySpa. If you design a larger room, you should employ an auxiliary heat source, such as a steam generator, to support the pump heater and help maintain the ambient temperature of the room.

FAUCETS AND FITTINGS

Because the Custom BodySpa recirculates tempered water the user adds, this installation requires the addition of a bath and shower faucet to fill the footbath basin and for personal cleansing. We recommend either K-1099 Taboret Rite-Temp single-control fitting or the K-1098 Taboret two-handle faucet kit. Talk to your distributor for additional information.

PROJECT REQUIREMENT SUMMARY	MINIMUM	MAXIMUM
BODYSIPA ROOM SIZE	16 SQ. FT. (47 X 50-INCHES)	32 SQ. FT. (92 X 50-INCHES)
WATER DEPTH	3-INCHES ABOVE TOP OF SUCTION COVER	4-INCHES ABOVE TOP OF SUCTION COVER
FOOTBATH BASIN CAPACITY	90 U.S. GALLONS	200 U.S. GALLONS
THRESHOLD HEIGHT	6-INCHES ABOVE TOP OF SUCTION COVER	7-INCHES ABOVE TOP OF SUCTION COVER
SUCTION HEIGHT FROM <u>FINISHED FLOOR</u>	2-1/2-INCHES TO CENTER	3-1/2-INCHES TO CENTER
SUCTION COVER DIAMETER	4-1/4-INCHES	
DISTANCE FROM PUMP BOX TO TOWER	NONE	36-INCHES DUE TO CABLE LENGTH
DISTANCE FROM SUCTION TO PUMP BOX	NONE	48-INCHES TO PERMIT DRAINAGE
AIR SPACE AROUND PUMP BOX	32 CU. FT.	NONE
FINISHED WALL THICKNESS	3/4-INCH	1-3/8-INCHES
FINISHED FLOOR THICKNESS	1/2-INCH	1-1/2-INCHES
PVC PIPE AND BASIN FLOOR PITCH	1/4-INCH PER FOOT	1/2-INCH PER FOOT

CUSTOM BODYSPA INSTALLATION INSTRUCTIONS

All information in this manual is based upon the latest product information available at the time of publication. At Kohler, we constantly strive to improve the quality of our products; we therefore reserve the right to make changes in product characteristics, packaging, or availability at any time without notice.

THE CUSTOM BODYSPA IS INTENDED FOR INDOOR USE ONLY.

IMPORTANT! READ THIS BEFORE YOU BEGIN.

This Custom BodySpa operates at flow rates up to **80 gallons per minute**. To achieve a watertight installation, it is critical that you follow all the design and installation instructions carefully. Pay particular attention to leveling and sealing details to obtain a satisfactory installation. **A WATERPROOFING MEMBRANE OR APPLIED COMPOUND MUST BE INSTALLED TO THE ENTIRE FLOOR AND WALL SURFACES WITHIN THE CUSTOM BODYSPA ROOM.**

SERIAL NUMBERS

Model No. (SKU) **K-1000 Tower**

Serial No. _____

Model No. (SKU) **K-1001 Pump Kit**

Serial No. _____

HOW TO USE THESE INSTRUCTIONS

IMPORTANT! It is critical that you follow the installation sequence and details in the steps that follow to successfully install and operate your Custom BodySpa. A series of color-coded **Check Point** boxes are included to assist you. **You need to complete the steps and requirements listed at each Check Point before you proceed to the next series of installation steps.** This will prevent costly repairs and rework due to unfamiliarity with custom bath and shower installations. If necessary, consult with a proven expert in custom installations before attempting this installation.

Kohler Co. shall not be responsible for leakage that occurs as a result of inadequate or poor assembly or installation techniques.

TABLE OF CONTENTS FOR YOUR INSTALLATION INSTRUCTIONS

HOW TO USE THESE INSTRUCTIONS	10	INSTALL CABLE (OUTLET BOX)	17
SERIAL NUMBERS	10	INSTALL CABLE	17
IMPORTANT SAFETY INSTRUCTIONS	11	INSTALL WATERPROOFING MEMBRANE	18
INSTALLER HAZARD NOTIFICATION	11	INSTALL SUCTION BUSHING	18
FACTORY-ASSEMBLED FEATURES	11	INSTALL CEMENT BOARD	19
PRODUCT MODIFICATIONS	11	CONSTRUCT FOOTBATH BASIN	19
CONNECTIONS AND SERVICE ACCESS	11	INSTALL WALL MATERIAL	19
PRODUCT INSPECTION	11	INSTALL FINISHED MATERIAL	20
ELECTRICAL REQUIREMENTS	11	INSTALL SUCTION ASSEMBLY	20
STUD POCKET PREPARATION	12	INSTALL FAUCET TRIM, SPOUT, DRAIN	21
PLUMBING PREPARATION	13	INSTALL DOOR ENCLOSURE	21
INSTALL THE TOWER MOUNTING FRAME .	13	INSTALL THE TOWER	22
INSTALL THE PUMP BOX	13	INSTALL THE KEYPAD	23
INSTALL VARIABLE FLOW VALVE	14	WATER TEST THE SYSTEM	24
INSTALL THE SUCTION BRACKET	15	CLEAN-UP AFTER INSTALLATION	24
SOLVENT WELD TUBING	16	TROUBLESHOOTING	25
ELECTRICAL CONNECTIONS	16		

IMPORTANT SAFETY INSTRUCTIONS



WARNING: When using electrical products, always follow basic precautions, including the following:



DANGER: Risk of electrical shock.

Connect only to a circuit protected by a Ground-Fault Circuit-Interrupter (GFCI).

A pressure wire connector is provided on the exterior of the pump or control within this unit to permit connection of a bonding conductor between this unit and all other exposed metal in the vicinity, as needed to comply with local requirements.

To reduce the risk of electric shock, connect only to a properly-grounded, grounding-type receptacle, protected by a Ground-Fault Circuit-Interrupter (GFCI). Do not remove the plug's ground pin. Do not use a grounding adapter.

Install to permit access for servicing.

Grounding is required. The unit should be installed and grounded by a qualified service representative.

INSTALLER HAZARD NOTIFICATION



WARNING: Risk of electrical shock. A licensed electrician should make all electrical connections.



WARNING: Risk of electrical shock. Disconnect power before servicing.



WARNING: Risk of injury or property damage. Please read all instructions thoroughly before beginning installation, including the following requirements.

NOTICE: Follow all local plumbing and electrical codes.

PRODUCT MODIFICATIONS



WARNING: Unauthorized modification may cause unsafe operation and poor performance of the Custom BodySpa. Do not remove the pump from the pump box or make non-recommended modifications to the BodySpa system. Unauthorized modifications could adversely affect the performance and safe operation of the unit. Kohler Co. shall not be liable under its warranty or otherwise for personal injury or damage caused by any unauthorized modification.

PRODUCT INSPECTION

Carefully unpack and inspect the tower, pump box, and suction bracket for damage. Return all materials to the cartons during construction to prevent damage.

FACTORY-ASSEMBLED FEATURES

Factory-installed components include a tower with ten pre-assembled BodySpa jets and a waterfall, a pump with integral heater, and a control.

The pump and most PVC piping connections are factory-assembled. The pump kit consists of components that require assembly, installation, and sealing on the job site by a reliable, qualified plumber.

CONNECTIONS AND SERVICE ACCESS

Before installation, ensure proper access to the final connections.

Install to permit access for servicing.

NOTICE: Provide unrestricted service access to the pump box. An access panel must be constructed to allow for sufficient clearance for servicing the pump and controls. The access panel must be located immediately next to the pump box. Refer to the Design Guide at the front of this manual, and the stud framing preparation requirements on Page 12.

ELECTRICAL REQUIREMENTS

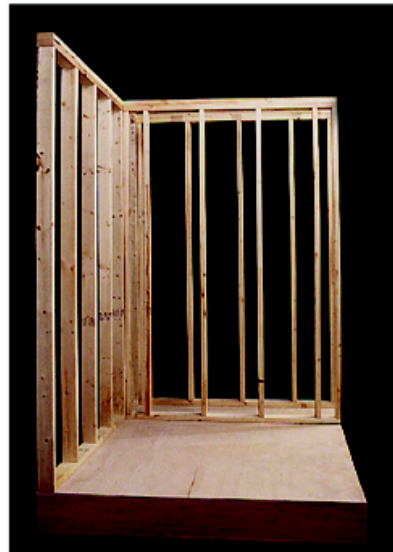
The installation must have a Class A Ground-Fault Circuit-Interrupter (GFCI). The GFCI protects against line-to-ground shock hazard. Use a 120 V, 20 A, 60 Hz dedicated service for the BodySpa.

STUD POCKET PREPARATION

NOTE: Carefully study the roughing-in pages located in the inside back cover pocket, and the illustration at right before you begin construction of the stud pocket. Follow the framing details carefully.

Use 2x4 framing for the stud pocket. Make sure you allow for access to the pump in the event the BodySpa requires service. Determine the drain location.

We recommend a room size approximately 60-inches long x 48-inches wide x 84-inches high for the Custom BodySpa installation. The basin design must provide for a water depth of at least 3-inches above the top of the suction cover. This will allow an overall basin depth of about 9-inches. The threshold of the basin should be 6 to 7-inches above the top of the suction cover. Construct the basin framing to result in an overall basin water capacity between 90 and 200 gallons.



You must provide at least 32 cubic feet (length x width x height) of unrestricted air space around the pump box for the motor to cool properly and to provide access to the pump. We suggest you construct a false wall behind the face wall framing. Locate the false wall along the tower wall.

For new installations, build this false wall so at least 12-inches of access space exists to the back of the face wall. For existing installations with finished walls, or if separate access panels for the pump, drain, water supplies, and suction assembly are not feasible, provide more than 14-inches of access space between the false and face walls so a repair person can maneuver between the walls.

Carefully study the door enclosure installation instructions packed with the door enclosure. Construct suitable framing for the door enclosure, including a header and support framing above the doorway to prevent heat and moisture from escaping. Remember to locate the door enclosure perpendicular to the tower wall.

If you plan to install grab bars or other accessories, provide sufficient backing.

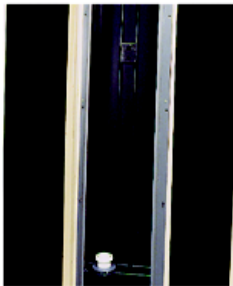
Check Point #1

- ☐ Room size and layout known.
- ☐ Provide 32 cu. ft. air space around pump box.
- ☐ Footbath basin size and shape known.
- ☐ Face and false wall locations known.
- ☐ Drain location known.

PLUMBING PREPARATION

NOTE: Locate the drain overflow so the PVC drain pipe will not exceed 48-inches in length.

Position the plumbing supplies and drain trap according to the roughing-in dimensions and the Custom BodySpa room design. Cap the supplies, and check for leaks.



INSTALL THE TOWER MOUNTING FRAME

On one of the tower mounting studs, draw a pencil line exactly 18-5/8-inches up from the subfloor. You will use this mark to temporarily position the tower mounting frame at the correct height. **Be precise with this measurement.**

Remove the three 3/8-inch tower bolts from the locations shown, and carefully lift the tower out of the mounting frame. Carefully set the tower aside where it will not be damaged.

Position and level the mounting frame between the tower mounting studs, and line up the bottom metal edge with the pencil line you drew on one of the studs.

Loosely hold the mounting frame to the stud framing with four of the ten drywall screws provided. Do not turn the screws all the way in at this time.

Check Point #2

- ☐ Plumbing supplies installed and capped.
- ☐ Tower mounting frame bottom edge positioned 18-5/8-inches above the subfloor.
- ☐ Tower mounting frame loosely mounted to studs.

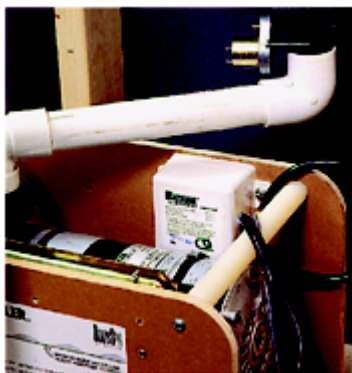
INSTALL THE PUMP BOX

The pump box contains a 2-horsepower pump and motor, along with the control box and an integral heater.

Remove the suction bracket assembly from the pump box. The suction bracket can later be installed in any chosen location within 48-inches of the pump box.

Fit the pump box between the false wall and face wall. Locate the pump box to maximize accessibility and so the pump inlet faces in the direction of your planned suction line. The pump box must be within 36-inches to either side of the tower so the tower and Waterfall cables will reach to the pump box. Do not secure the pump box in place at this time.





INSTALL THE VARIABLE FLOW VALVE ASSEMBLY

NOTE: Do not use flexible tubing for this tubing section, and do not add additional elbows or fittings between the variable flow valve and the pump elbow and union assembly. If water does not completely drain from the tower and variable flow valve assembly, the resulting air pocket will prevent the pump from priming, and the BodySpa will not work.

Loosely hand tighten the mounting frame union nut to the variable flow valve assembly so the elbow faces toward the pump outlet. Loosely hand tighten the pump elbow and union assembly to the pump outlet so it faces toward the variable flow valve assembly. Measure and cut a length of 1-1/4-inch (I.D.) rigid PVC tubing to connect the variable flow valve to the pump outlet. Do not solvent weld the PVC connections at this time. Use a level and measuring tape to ensure a minimum 1/4-inch per foot pitch toward the pump.



CAUTION: Risk of personal injury. The red and black wire leads must be connected exactly as instructed to prevent the variable flow valve from operating in reverse.

Locate the red and black wire lead cable at the back of the pump. Connect the red wire lead to the positive <+> variable flow valve terminal. Then connect the black wire lead to the negative <-> terminal. Check that the wire leads are connected to the correct terminals before proceeding.

Check Point #3

- ☐ Pump box is positioned within 36-inches of tower mounting frame, and is oriented toward suction (water intake) line.
- ☐ Suction bracket assembly removed from pump box, if necessary.
- ☐ Variable flow valve is oriented toward the pump.
- ☐ Rigid 1-1/4-inch (i.d.) pvc tubing measured, cut, and fit, but not solvent welded.
- ☐ Pitch of 1/4-inch per foot from tower mounting frame to pump outlet connection.
- ☐ Variable flow valve assembly attached.
 - ☐ Red lead (+)
 - ☐ Black lead (-)

INSTALL THE SUCTION BRACKET

Position the suction bracket assembly in the desired installation location. Consider locating the suction assembly on a piece of 2x6 if needed to provide better clearance with the finished basin material. The center of the suction cover must be located between 2-1/2 and 3-1/2-inches up from the estimated finished floor surface. Do not secure the suction bracket assembly in place at this time.

NOTE: Water drainage of the entire Custom BodySpa system occurs through the suction assembly. Do not use flexible tubing for the suction line. Use straight sections of rigid PVC tubing and at most one additional elbow or fitting if needed. Always maintain a minimum 1/4-inch per foot pitch toward the suction assembly when measuring and connecting the piping. Do not use elbows to change the vertical direction of the tubing.

Measure and cut a length of 1-1/2-inch (I.D.) rigid PVC tubing to connect the suction housing to the pump inlet. Do not solvent weld the PVC connections at this time. Use a level and measuring tape to ensure a minimum 1/4-inch per foot pitch toward the suction fitting to provide adequate drainage.

NOTE: Refer to the minimum waterline height information on the side of the pump box to determine the maximum pump box height.

If the suction line does not provide the necessary 1/4-inch per foot pitch, shim under the pump box to raise the pump box slightly to achieve the correct pitch. Then remove the four drywall screws from the mounting frame, and raise the mounting frame the same distance you raised the pump box. Re-install the four drywall screws, and tighten securely.

NOTE: If you raise the pump box and tower height, you must also plan to increase the footbath basin minimum water level accordingly. This will increase the threshold height and minimum 9-inch water depth. Failure to do so will prevent the pump from priming.

Install the remaining six drywall screws to the mounting frame, and tighten securely.



Check Point #4

- ☐ **Suction bracket assembly is positioned.**
- ☐ **Rigid 1-1/2-inch (i.d.) pvc tubing measured, cut, and fit, but not solvent welded.**
- ☐ **Waterline height confirmed using the label on the pump box.**
- ☐ **Minimum pitch of 1/4-inch per foot from pump inlet connection to suction housing.**
- ☐ **Tower mounting frame is permanently secured.**



SOLVENT WELD TUBING

Solvent weld the PVC tubing connections, using care to maintain the established drainage pitch in the lines. Make sure each union connection includes the required O-ring. Securely hand tighten the union nuts.

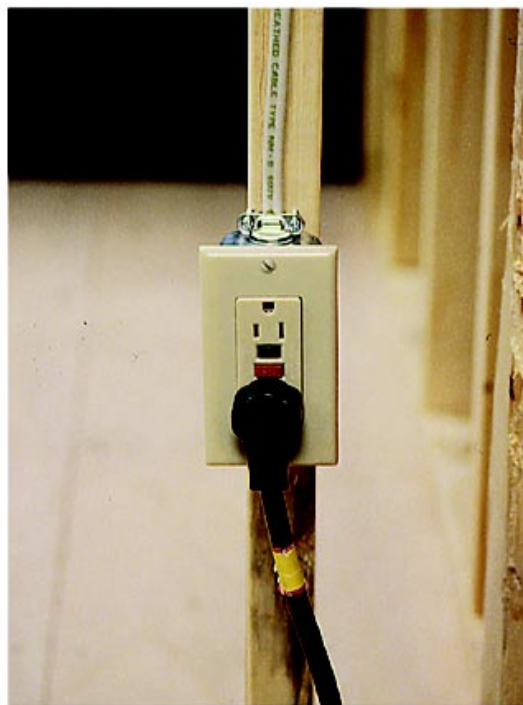
Check Point #5

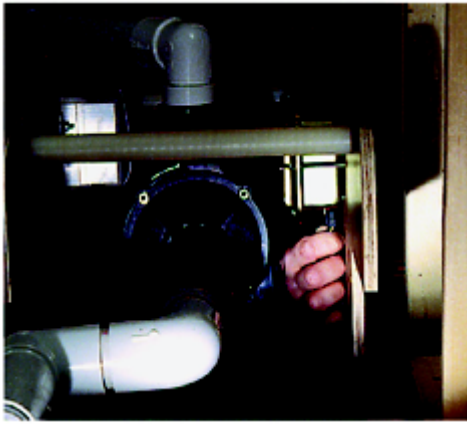
- ☐ Confirm that all previous check point requirements have been met.
- ☐ Solvent weld all pvc tubing joints, and hand tighten the union nuts with the O-rings in place.

MAKE ELECTRICAL CONNECTIONS

⚠ WARNING: Risk of electrical shock. To reduce the risk of electric shock, connect only to a properly grounded, grounding-type receptacle, protected by a Ground-Fault Circuit-Interrupter (GFCI). Do not remove the plug's grounding pin. Do not use a grounding adapter.

The Kohler Custom BodySpa is equipped with a cord and plug. All wiring of the pump has been completed at the factory. A licensed electrician must install a GFCI-protected, 120 V, 20 A, grounded outlet. Locate the outlet behind the BodySpa, and within 24-inches of the pump. Plug the BodySpa into this outlet. No other load should be on this circuit.





INSTALL CABLE WITH OUTLET BOX

NOTE: If the desired keypad location does not permit you to secure the provided outlet box directly to a stud, you can route the cable directly through the wall material without using an outlet box. Proceed to Install Cable Without Outlet Box to install the keypad without an outlet box.

Plug the cable into the corresponding jack located on the bottom of the control box.

Position the supplied outlet box inside the room's Water-Free Zone at the chosen control mounting location so **the metal plate** (not shown) **will be flush with the finished wall or slightly recessed** when installed. Install the outlet box so the 10-foot cable is within reach of the control box. **Do not** stretch or pull on the cable. Install the outlet box 58 to 60-inches up from the subfloor.

Secure the outlet box to the nearest stud.

Route the cable from the control box to the outlet box, and insert the loose connector into the knockout hole in the outlet box. Create a drip loop in the cable.

NOTE: National Electrical Code requires that you permanently separate the high- and low-voltage cables.

INSTALL CABLE WITHOUT OUTLET BOX

Plug the cable into the corresponding jack of the control box. Route the cable directly through the large hole in the center of the metal plate. Temporarily tape together the cable and the metal plate. Also tape the two screws to the metal plate to prevent them from becoming lost. Create a drip loop in the cable to prevent water from following the cable down to the control box.

Temporarily secure the cable and metal plate to the stud nearest your chosen keypad mounting location within the room's Water-Free Zone. Position the metal plate 58 to 60-inches up from the subfloor.

Leave the cable and metal plate attached here until the finished wall is constructed. At that time, you will permanently attach the metal plate flush to the outside surface of the finished wall with two screws. Then you will secure the cable to the metal plate with a cable tie looped between the large and small center holes in the metal plate.

NOTE: National Electrical Code requires that you permanently separate the high- and low-voltage cables.



Check Point #6

- ☐ GFCI-protected electrical power supplied to pump box (120 V, 20 A).
- ☐ Keypad cable installed and connected to the control box,
 - ☐ With outlet box, or
 - ☐ Without outlet box.

INSTALL WATERPROOFING MEMBRANE OR COMPOUND

WARNING: Risk of property damage and concealed leakage. To achieve a watertight BodySpa installation, it is critical that you install the waterproofing membrane or applied compound according to the material manufacturer's instructions. Kohler Co. will not be liable for damage caused by waterproofing materials that are improperly installed or sealed.

NOTE: The waterproofing membrane or applied compound and the cement board can be installed in any order you prefer, as long as they are installed **exactly** as directed. Follow all material manufacturer's instructions.

Install a waterproofing membrane or applied compound to the **entire** floor and wall surfaces (up to the ceiling).

Although some membranes can be installed directly to the stud framing, we suggest you install a plywood backing behind the membrane at least to the height of the basin threshold.



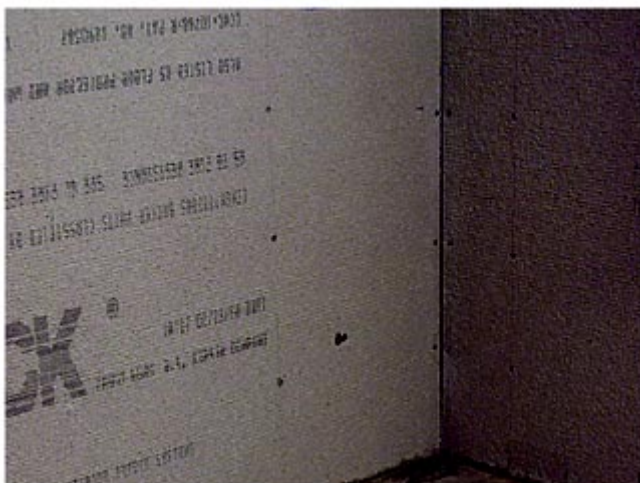
INSTALL SUCTION BUSHING

Use a 3-1/4-inch hole saw to carefully cut a hole in the waterproofing membrane and plywood backing at the suction inlet location.

Press the spacer fully into the suction housing inlet.

Apply silicone sealant to the bushing flange surface, and insert the bushing through the suction hole. Partially thread the nut to the bushing. Do not tighten. Apply silicone sealant to the end threads of the bushing, and carefully thread the bushing to the housing until hand tight. Wrench tighten an additional 1/4 turn. **Do not overtighten.** Wrench tighten the nut against the plywood backing. **Do not overtighten.** Remove any excess sealant.





INSTALL CEMENT BOARD

Install cement board to the walls according to established installation methods. The cement board must cover the entire wall surface from ceiling to subfloor. Provide a cut-out area around the mounting frame.

Mark the cement board for the suction fitting hole by first measuring up at least 2-1/2-inches from the footbath basin material. Add the thickness of the finished floor material you plan to use, and draw a pencil mark at that location. Make sure the wall is perfectly flat and smooth within a 5-inch diameter area around the suction hole pencil mark. Use a hole saw to drill a 3-1/4-inch hole in the cement board at the pencil mark.

Carefully cut holes for the water supplies, suction, drain and drain overflow, as well as any lighting fixtures or other required accessories.

Cut a hole around the keypad outlet box, if used. If you are not using the outlet box, cut or drill a 1-1/8-inch diameter hole for the cable.

CONSTRUCT FOOTBATH BASIN

Construct the footbath basin according to your specific BodySpa room design. Employ established shower basin fabrication materials and techniques. Provide a 1/4 to 1/2-inch per foot pitch to the footbath basin floor for the correct floor drainage.

Locate and cut the drain and drain overflow holes according to the instructions packed with the drain. The K-7179 Drain has been specially designed for the Custom BodySpa, and is recommended for use with this installation. The installation instructions included with the K-7179 Drain provide detailed instructions for this installation. Install the drain flange according to the drain instructions.

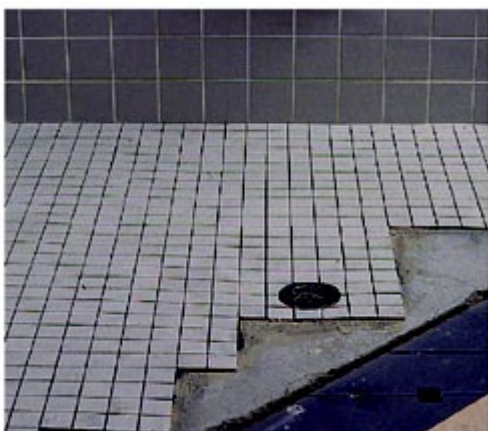
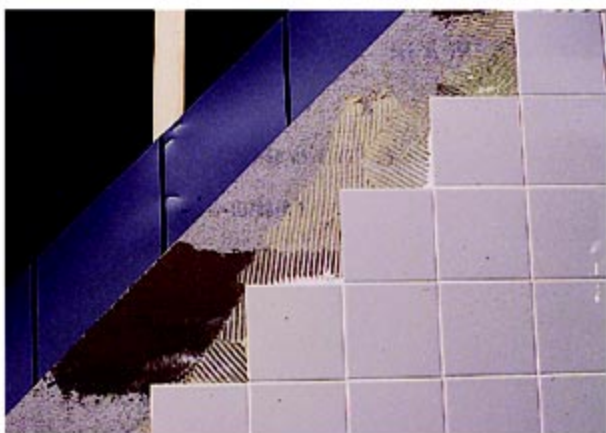
INSTALL WATER-RESISTANT WALL MATERIAL

Install water-resistant wall material to the entire ceiling surface according to established methods.



Check Point #7

- ☐ **Waterproofing membrane or compound installed.**
- ☐ **Suction bushing installed.**
- ☐ **Cement board installed to subfloor and walls.**
- ☐ **Required holes marked and cut in cement board.**
- ☐ **Confirm footbath basin floor pitch of 1/4 to 1/2-inch per foot.**



INSTALL SUCTION ASSEMBLY

Apply a thin bead of clear, high-quality silicone sealant around the flange rim and on the threads, and insert the flange into the bushing. Securely thread the flange to the bushing.

Remove any excess sealant.



CONSTRUCT FINISHED BASIN, WALLS, AND CEILING

NOTE: Refer to the Design Guide section of this manual for finished basin and wall material recommendations and information.

Install the finished basin, walls, and ceiling materials according to established installation methods. For the suction assembly and K-7179 Drain, the wall must be 3/4 to 1-3/4-inches thick. The total thickness of the basin (basin material and finished floor material combined) must not exceed 1-1/4-inches at the drain for the K-7179 Drain. Refer to the installation instructions packed with the drain for specific details.

Cut or drill holes for the tower, keypad, water supplies, suction, drain and drain overflow, as well as any light fixtures or other accessories.

⚠ DANGER: Risk of death or serious injury. Gaps between the suction cover and the finished basin material present a serious hair entrapment hazard. The finished basin material must be constructed so the suction cover installs against a flat, smooth surface. Carefully repair or seal all gaps.

Finish the basin wall surface so it is perfectly flat and smooth within the 5-inch diameter area around the suction hole.



Install the suction cover and metal spacer (if included) to the flange with the suction cover screw. Use a screwdriver to tighten the suction cover screw until snug. **Do not overtighten.** In addition, make sure all the suction cover holes are clear and unobstructed to maximize performance. Press the plug button in place over the screw head.

Permanently secure the suction bracket and pump box to the wall and floor, if desired.

Allow the sealant to fully cure.

Check Point #8

- ☐ **Finished basin, wall, and ceiling materials installed.**
- ☐ **Suction assembly installed, with silicone sealant applied to all the threads and areas the suction flange contacts.**
- ☐ **Suction cover fits flat against finished basin wall.**
- ☐ **Silicone sealant fully cured.**

INSTALL FAUCET TRIM, SPOUT, AND DRAIN

CAUTION: Risk of property damage. You must adequately seal the valve, spout, and other plumbing fittings to prevent water leakage behind the finished wall.

Install the faucet trim and spout according to the manufacturer's instructions. Seal around the plumbing fittings with a high-quality sealant.

Install and connect the drain according to the instructions packed with the drain.

Fill the footbath basin with water, and check for leaks.



INSTALL THE DOOR ENCLOSURE

Install the door enclosure according to the manufacturer's instructions. Follow all sealing and installation instructions carefully to ensure troublefree door operation and to limit moisture and heat escape from around the door.

INSTALL THE TOWER

Locate the pin at the bottom left corner of the tower. Insert this pin into the bottom left corner hole in the mounting frame bracket. Now line up the hole at the top left corner of the tower with the slotted hole in the mounting frame, and thread a 3/8-inch bolt through the mounting frame and into the tower. Securely wrench tighten the bolt.

Route the tower cable through the large hole in the mounting frame. Snap the tower cable modular plug into the corresponding jack of the control box. Install the large strain relief bushing over the tower cable, and insert it into the large mounting frame hole.

NOTE: National Electrical Code requires that you permanently separate the high- and low-voltage cables.

Route the waterfall light wires through the small hole in the back of the mounting frame. Connect the waterfall light wire connectors to the transformer terminals – white to white; black to black. Install the small strain relief bushing over the waterfall light wires, and insert it into the small mounting frame hole.

Securely handtighten the tower union nut to the mounting frame union. Be sure the union O-ring is in place.

Carefully pivot the tower closed. Line up the holes at the top and bottom right corners of the tower with the slotted holes in the mounting frame. Thread a 3/8-inch bolt through the mounting frame and into the tower at the top and bottom. Tighten the bolts securely, but do not overtighten.

You will water test and inspect the tower and mounting frame later, so you may want to only install and handtighten one of the required bolts at this time. Both bolts will need to be securely tightened later.





INSTALL THE KEYPAD



CAUTION: Risk of personal injury or product damage. The metal plate must be installed flush with the finished wall or slightly recessed (maximum 1/4-inch).

Feed the cable through the hole in the metal plate. Use two flathead screws to attach the metal plate to the outlet box or finished wall material so the metal plate is **flush** with the finished wall or **slightly recessed** (maximum 1/4-inch).

Snap the keypad modular plug into the keypad cable jack.

Apply silicone sealant to each of the keypad screw holes and around the keypad edges, and secure the keypad to the metal plate with four panhead screws.



CAUTION: Risk of personal injury or product damage. Prevent water damage to the keypad by applying silicone sealant as instructed.

IMPORTANT! Apply a continuous bead of clear silicone sealant to the cover plate sealant grooves, as shown.

Slip the center pin at the top of the cover plate up through the hole in the keypad. Secure the cover plate to the keypad with a panhead screw.

Select the bottom cap – it contains a small pinhole, and has a small notched area along the contact surface edge.

IMPORTANT! Apply clear silicone sealant to the back surface of the bottom cap, and also to the edge that contacts the cover plate. Align the bottom cap holes with the cover plate pins, and push the cap into place. Repeat for the top cap.

Remove any excess sealant.



Check Point #9

- ☐ Faucet trim and spout installed.
- ☐ Drain assembly installed.
- ☐ Footbath basin filled with water and checked for leakage.
- ☐ Door enclosure installed.
- ☐ Tower installed.
- ☐ Keypad installed and sealed with silicone sealant.
- ☐ Keypad wiring connections made.



WATER TEST THE SYSTEM

Allow the silicone sealant and any finished wall materials or grout to fully cure before proceeding. Follow all manufacturer's recommendations regarding water exposure to their products as well as product cure times.

Make sure all PVC union connections are securely hand tightened, and that all union connections use an O-ring.

Fill the footbath basin at least 3-inches above the top of the suction cover.

Turn on the BodySpa for about five minutes, and check all visible connections for leaks.

Turn off the BodySpa.

Open the tower, and inspect all piping connections for leaks.

Check the connections on the back surface of the face wall, and check all wall and floor joints for leaks.

Close the tower. Thread in and securely wrench tighten two 3/8-inch bolts. Do not overtighten.

CLEAN-UP AFTER INSTALLATION

Clean the Custom BodySpa room with a mild, non-abrasive detergent and warm water. **Do not use abrasive cleansers.**

Remove stubborn stains and paint from the tower surfaces with turpentine or paint thinner. Remove dried plaster by carefully scraping with a dull-edged piece of wood. Do not use metal scrapers, wire brushes, or other metal tools. Remove residual plaster by applying a powder-type detergent to a clean, damp towel to provide mild abrasive action.

Check Point #10

- ☐ **Ensure that all connections are securely tight.**
- ☐ **Fill the footbath basin with water to 3-inches over the top of the suction cover.**
- ☐ **Run the bodyspa, turn off, and drain the water. check for leakage.**
- ☐ **Open the tower, inspect for leakage, and close and secure the tower.**

TROUBLESHOOTING		
SYMPTOMS	PROBABLE CAUSES	CORRECTIVE ACTION
BodySpa does not start/stop.	No power to pump/receptacle/keypad.	Set/Reset GFCI breaker; check wiring.*
	Harness is blocked.	Remove blockage.*
	Keypad disconnected from pump/control box.	Reconnect keypad.
	Keypad doesn't work.	Replace keypad.*
	Circuit board doesn't work.	Replace circuit board inside control box.*
	Motor/pump assembly doesn't work.	Replace motor/pump assembly.*
Water flow surges.	Not enough water in footbath basin.	Fill basin 3-inches over top of suction cover.
	Suction is blocked.	Remove obstruction.
	Harness is blocked.	Remove blockage.*
Motor starts, all Body Jets are not functioning.	Body Jet is blocked.	Remove blockage.*
	Keypad doesn't work.	Replace keypad.*
	Body Jet butterfly valve wiring loose or damaged, or butterfly valve is faulty.	Identify source of fault and correct, or replace faulty butterfly valve.*
	Not enough water in footbath basin. (Pump cavitates.)	Fill basin 3-inches over top of suction cover.
Motor starts, Waterfall does not function.	Waterfall is blocked.	Remove blockage.*
	Keypad doesn't work.	Replace keypad.*
	Waterfall butterfly valve wiring loose/damaged – butterfly valve doesn't work.	Identify source of fault and correct, or replace faulty butterfly valve.*
	Not enough water in footbath basin. (Pump cavitates.)	Fill basin 3-inches over top of suction cover.
Water flow increases when ▼ keypad button is pressed – decreases when ▲ button is pressed.	Variable flow valve wiring error.	Reverse variable flow valve wire connections.*
Waterfall light does not work.	Light bulb is burned out.	Replace light bulb.*
	Loose or damaged wiring.	Identify source of fault and correct.*
BodySpa stops automatically before 18 minutes.	GFCI trips.	Identify source of fault and correct.*
	Motor overheated and protection device activated.	Check for: restricted air space around pump box; motor vent blockage; suction/harness blockage. Correct and allow motor to cool.*
BodySpa does not automatically stop after 22 minutes.	Timer mechanism doesn't work.	Replace timer board inside pump/motor.*
	Wiring error.	Refer to dealer/installer.
Noisy operation.	Not enough water in footbath basin. (Pump cavitates.)	Fill basin 3-inches over top of suction cover.
* Refer to dealer/installer.		

CUSTOM BODYSPA USER’S INFORMATION

Your Custom BodySpa is designed to give you an invigorating hydro-massage bathing adventure unlike anything you’ve experienced before.

A BOLD LOOK FOR YOUR HOME

Thank you for choosing The Bold Look of Kohler with your Custom BodySpa Personal Hydro-Massage System. Kohler craftsmanship offers you a rare combination of proven performance and graceful sophistication with the Custom BodySpa. The dependability and beauty of your BodySpa will surpass your highest expectations. We’re very proud of the Custom BodySpa here at Kohler Co., and you will be too.

Please take a few minutes to study this operating and maintenance guide before you use the BodySpa for the first time. Pay special attention to the care and cleaning instructions starting on Page 29.

All information in this guide is based upon the latest product information available at the time of publication. At Kohler, we constantly strive to improve the quality of our products, and therefore reserve the right to make changes in product characteristics, packaging, or availability at any time without notice.

OUR MISSION

Our mission is to enhance the level of gracious living for those who are touched by our products and services.



TABLE OF CONTENTS FOR YOUR USER’S INFORMATION

A BOLD LOOK FOR YOUR HOME	26
OUR MISSION	26
IMPORTANT SAFETY INSTRUCTIONS	27
LET’S GET STARTED	28
LOOK AT THESE FEATURES	29
CARE AND CLEANING	29
FLUSHING YOUR BODYSPA SYSTEM	29
CLEANING YOUR BODYSPA TOWER	30
CLEANING THE WALLS AND BASIN	30
CLEANING YOUR DOOR ENCLOSURE	30
SERVICE AND WARRANTY	30
CALL US FOR HELP	30
LIMITED ONE-YEAR WARRANTY	30

IMPORTANT SAFETY INSTRUCTIONS

READ AND FOLLOW ALL INSTRUCTIONS

SAVE THESE INSTRUCTIONS

INSTRUCTIONS PERTAINING TO A RISK OF FIRE, ELECTRIC SHOCK, OR INJURY TO PERSONS



WARNING: When using this unit, always follow basic precautions, including the following:



DANGER: Risk of personal injury. To reduce the risk of injury, do not permit children to use this unit unless they are closely supervised at all times.



DANGER: Risk of personal injury. Hot whirlpool baths can put certain stresses on the body, as does any hot bath, shower, sauna, or steam bath. **Prolonged immersions in hot water may induce hyperthermia.** Symptoms of hyperthermia include an increase in the internal body temperature, dizziness, lethargy, drowsiness, and fainting. The effects of hyperthermia include (1) failure to perceive heat, (2) failure to recognize the need to exit the bath, (3) unawareness of impending hazard, (4) fetal damage in pregnant women, (5) physical inability to exit the bath, and (6) unconsciousness resulting in the danger of drowning. **Warning – The use of alcohol, drugs, or other medication can greatly increase the risk of fatal hyperthermia.**

Use this unit only for its intended use as described in this manual. **Do not** use attachments not recommended by Kohler Co.

Do not operate this unit without the guard (cover) on the suction fitting.

Never drop or insert any object into any opening.

IMPORTANT! Flush your Custom BodySpa system twice a month or more depending upon usage, as described on Page 29.

Keep small objects such as bath toys and bathing accessories out of the BodySpa room while the BodySpa is running.

Repeated use of personal care products containing oils can damage plastic BodySpa components. Do not use heavy, vegetable-based shampoos or bath oils.

BodySpa hydro-massage action can cause even a small amount of bubble bath, bath soap, shampoo, or bath oil to foam excessively. For this reason, refrain from using these products during BodySpa operation.

Do not allow the water temperature in the BodySpa to exceed 104° F (40° C).

The unit must be connected only to a supply circuit that is protected by a Ground-Fault Circuit-Interrupter (GFCI). Such a GFCI should be provided by the installer and should be tested on a routine basis.

To test the GFCI, push the test button. The GFCI should interrupt power. Push the reset button. Power should be restored.

If the GFCI fails to operate in this manner, there is a ground current flowing, indicating the possibility of an electric shock. **DO NOT** use this unit. Disconnect the unit and have the problem corrected by a qualified service representative before using.

To reduce the risk of electric shock, connect only to a properly grounded, grounding type receptacle, protected by a Ground-Fault Circuit-Interrupter (GFCI). Do not remove the plug's ground pin. Do not use a grounding adapter.

A pressure wire connector is provided on the exterior of the pump or control within this unit to permit connection of a bonding conductor between this unit and all other exposed metal in the vicinity, as needed to comply with local requirements.

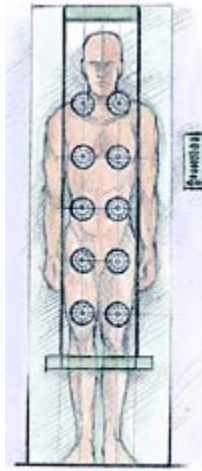
Your new Kohler Custom BodySpa has been listed by Underwriter's Laboratories, thus ensuring safety for you and your family. Your new BodySpa also conforms to rigid ANSI and IAPMO standards set within the plumbing industry.

LET'S GET STARTED

If you're like most people who install a Kohler Custom BodySpa, you can't wait to get in and try it out. You'll soon find that the BodySpa features and controls are very easy to use, and offer you a safe and exciting personal care adventure. There are a few things you should know before you start using your new Custom BodySpa. Please spend a few minutes with these simple rules, and then you'll be ready to go.

- Remove all loose bathing items, such as soap bars, shampoo bottles, and washcloths from the BodySpa room. Make sure nothing is resting on the Waterfall ledge.
- Remove your eyeglasses or contact lenses, and any loose jewelry before entering the BodySpa room.
- Don't use shampoo, soap, or bubble bath in the BodySpa water. Of course, you can freely use shampoo and soap for showering before you fill the footbath basin.
- Use the bath fill spout to fill the footbath basin with tempered water to a level at least 3-inches above the top of the suction cover.
- Close the door enclosure securely.
- Always stand clear of the water stream when you turn on the BodySpa, or whenever you use the keypad control to adjust the water flow. You should also step into the Water-Free Zone anytime you want to take a short break from the invigorating effects of your hydro-massage experience.
- Use your hand to check the water temperature in the footbath basin before you start up your Custom BodySpa. Never fill the footbath with water that is too hot (in excess of 104° F).
- Press the **Power** key to turn on the BodySpa.
- When you turn on the BodySpa, it will take several seconds for the water to begin flowing. Let the water flow for several seconds before you enter the water stream so the water temperature has a chance to moderate.
- When you turn on the BodySpa, the water will start to flow at its lowest setting. We suggest you increase the water force gradually until you get used to the intensity of the BodySpa experience. Press the ▲ or ▼ key on the keypad control to increase or decrease the water flow.
- The Waterfall will automatically start when you turn on the BodySpa. When you press the **Body Jets** key, water will begin flowing from Body Jet arrays 2, 3, and 4 at low speed. The Waterfall will turn off. Toggle any of the number keys to turn on or off the corresponding Body Jet arrays.
- The BodySpa will automatically shut off after about 20 minutes of continuous use. If you want to use your BodySpa for more than one 20-minute cycle, simply step into the Water-Free Zone and restart the action by pressing the **Power** key.
- If you feel faint, dizzy, or lightheaded at any time while using your BodySpa, immediately step into the Water-Free Zone, turn off the unit by pressing the **Power** key, and exit the room immediately.
- Press the **Power** key a second time to turn off the BodySpa.





LOOK AT THESE FEATURES

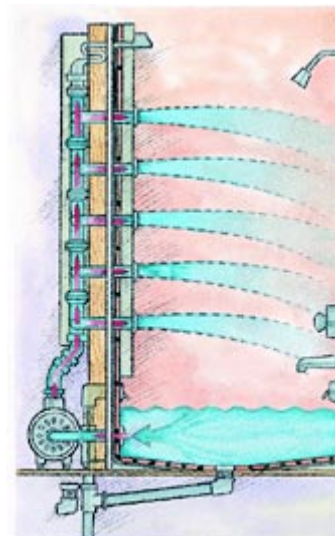
- Your Custom BodySpa is designed to stimulate, invigorate, and energize your body for total hydro-massage relaxation.
- Activate any or all of the Body Jet arrays or the lighted, overhead Waterfall to personalize your BodySpa experience.
- With BodySpa, you have complete freedom of movement (and choice) to focus your hydro-massage where you need it the most.
- BodySpa features an easy-to-read electronic keypad control. With it, you can individualize each BodySpa experience by selecting the lighted, overhead Waterfall or any combination of five pairs of Body Jets. You can vary the intensity of your BodySpa hydro-massage from gentle to vigorous with the touch of a finger.
- The quiet but powerful 2-horsepower pump and motor combine to deliver up to 80 gallons of water each minute to intensify your hydro-massage bathing experience.
- The integral heater built right into the pump housing helps maintain the temperature of the water while your Custom BodySpa is running.

CARE AND CLEANING OF YOUR CUSTOM BODYSPA

FLUSHING YOUR CUSTOM BODYSPA SYSTEM

Sanitize your Custom BodySpa system by flushing it twice a month or more, depending upon usage.

1. Fill the footbath basin with hot water to a level 3-inches above the top of the suction cover.
2. Add 2-teaspoons low-foaming dishwasher detergent and 1/2-cup household bleach to the water.
3. Run the BodySpa for 5 to 10 minutes in the Waterfall mode; then another 5 to 10 minutes with all ten Body Jets running at the same time. Then shut off the BodySpa, and drain the water.
4. Fill the footbath basin with cold water to a level 3-inches above the top of the suction cover, and run the BodySpa for another 5 to 10 minutes in both the Waterfall and ten Body Jet modes. Drain the footbath basin, and wipe it dry with a clean, soft cloth.



CLEANING YOUR CUSTOM BODYSPA TOWER

Use mild soap and warm water to clean your Custom BodySpa tower. Wipe the entire surface completely dry with a clean, soft cloth. Many cleaners contain harsh chemicals, such as ammonia, which can adversely affect the finish and are not recommended for cleaning the tower.

Do not use abrasive cleansers or solvents on your Kohler Custom BodySpa tower.

CLEANING THE WALLS AND BASIN

Various wall and basin materials require different cleaners and cleaning methods to keep them looking like new. Follow the care, cleaning, and maintenance instructions furnished by the wall and basin material suppliers and manufacturers.

CLEANING YOUR DOOR ENCLOSURE

For Kohler Door Enclosures: Keep your Kohler door enclosure looking like new with a simple routine of daily care. Apply a glass cleaner with a clean sponge, and immediately rinse off the area with clean water.

Water conditions in various parts of the country will determine any extra cleaning attention you may need to give your door enclosure.

Kohler Co. does not recommend the use of harsh abrasive chemicals on any of its products. Harsh cleansers will damage the metal and glass finish on your door enclosure.

We recommend that you replace seals when they show signs of wear, yellowing, or leakage. For replacement parts, please contact the dealer where you purchased the door enclosure.

For non-Kohler Door Enclosures: Follow the care and cleaning instructions furnished by the door enclosure manufacturer.

SERVICE AND WARRANTY INFORMATION

CALL US FOR HELP – 1-800-4-KOHLER

Contact your dealer or plumbing contractor if you encounter problems with your Custom BodySpa. Ask them to review this booklet to be sure all the design and installation steps have been followed **exactly**. If the BodySpa system still fails to operate correctly, contact Kohler Co. either through your dealer or plumbing contractor, or by writing: Kohler Co., Attn: Customer Service Department, 444 Highland Drive, Kohler, WI 53044, USA, or by calling **1-800-4-KOHLER**. Please be sure to provide all pertinent information regarding your claim, including a complete description of the problem, the product, model number, color, finish, and the date the product was purchased. Also include the name of your contractor or distributor and your original invoice.

LIMITED ONE-YEAR WARRANTY

Kohler plumbing fixtures and fittings are warranted free of manufacturing defects.

Kohler Co. will, at its election, repair, replace, or make appropriate adjustment where Kohler Co. inspection discloses any such defects occurring in normal usage within one year after installation.

Kohler Co. is not responsible for installation or removal costs.

To obtain warranty service, contact Kohler Co. either through your Dealer or Plumbing Contractor, or by writing Kohler Co., Attn: Customer Service Department, 444 Highland Drive, Kohler, WI 53044 USA, or by calling **1-800-4-KOHLER** from within the USA.

Implied warranties, including that of merchantability or fitness for a particular purpose, are expressly limited in duration to the duration of this warranty. Kohler Co. disclaims any liability for special, incidental, or consequential damages.

Some states do not allow limitations on how long an implied warranty lasts or the exclusion or limitation of special, incidental, or consequential damages, so these limitations and exclusions may not apply to you. This warranty gives you specific legal rights. You may also have rights which vary from state to state.

This limited warranty provides specific legal rights as they apply within the USA, and other rights may be available, but may vary from country to country. This is our exclusive written warranty.

KOHLER CO., KOHLER, WISCONSIN 53044

THE BOLD LOOK
OF **KOHLER**®